

The main logo for eurosim, identical to the one in the top right, but larger. Below it, the text 'Mk5' is written in a bold, orange, sans-serif font.

Taking the proven product to the next level

Products, Services, Support



► Products

- Systems
- Licenses
- Addons

► Services

- Helpdesk and maintenance
- Training Courses
- Consultancy

► Communication

- Website
- Delivery server
- Forum

Moving to a full product suite

► Systems

- Fully integrated, tuned and verified hard real-time solution
- EuroSim Mk5 server, Concurrent ihawk computer, Interface boards

► Licenses:

- Desktop, Server, Runtime and temporary licenses
- Linux and Windows

► Addons:

- A variety of partner products and interfaces to further extend EuroSim
- Visualization, UML, Embedder, Drivers, Models, Convertors

New Addons Realized

EuroSim is your one stop shop for our independent partner products that have a proven interface with EuroSim

- ▶ OpenIGS2, for visualization
- ▶ UML-EA, for simulator generation from UML
- ▶ GGNCSim, for Guidance & Navigation Control development
- ▶ Embedder, for generating embedded realtime simulators
- ▶ Mosaic, for conversion of models to compliant formats

New clear license model

- ▶ Desktop license:
 - ▶ Perpetual, Node locked, Single User, Linux & Windows
 - ▶ Fully functional, Soft RealTime execution

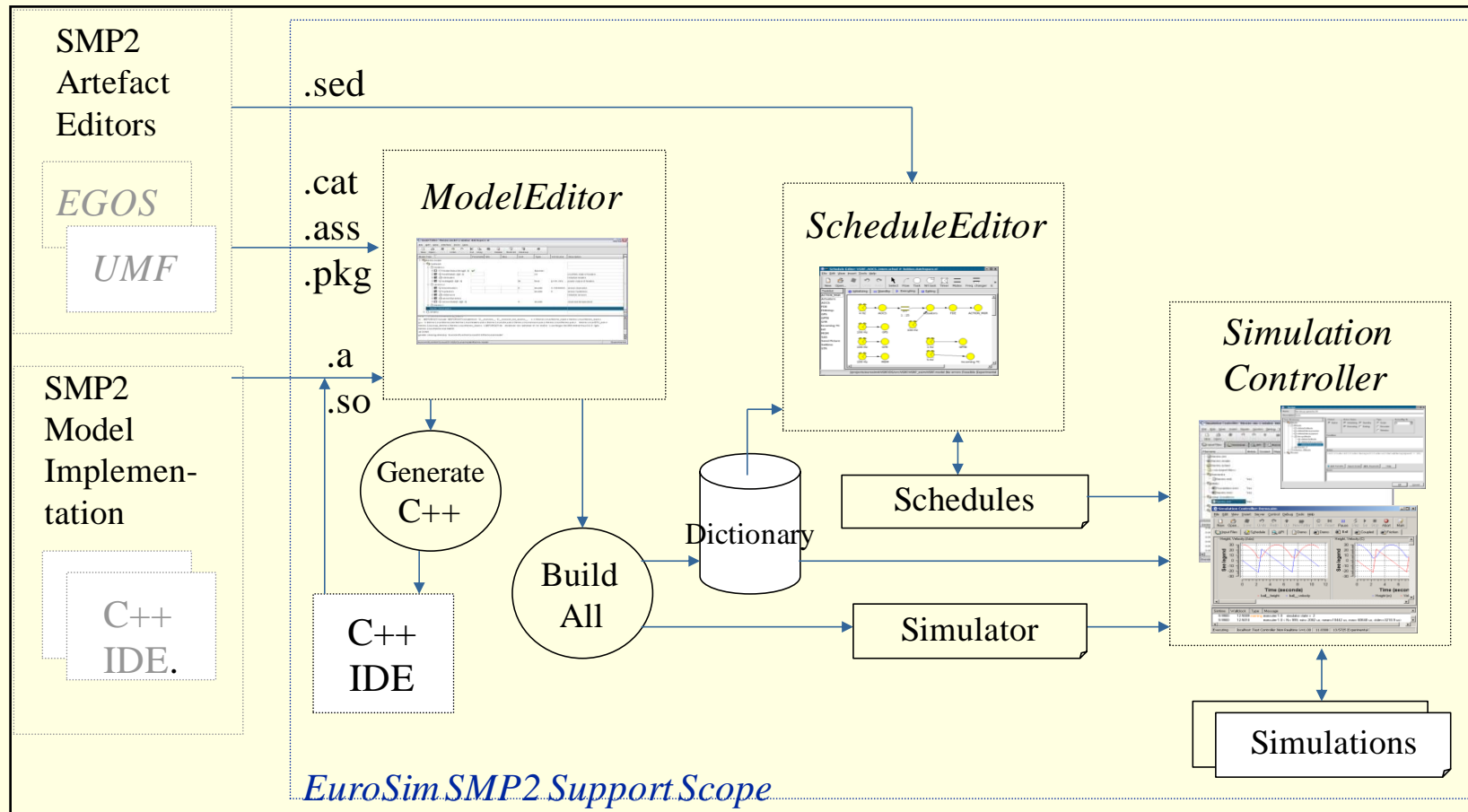
- ▶ Server license:
 - ▶ Perpetual, Node Locked, Multi-User, Linux only
 - ▶ Supporting Hard RealTime execution

- ▶ Runtime license:
 - ▶ Deployment license for execution of simulators, Linux only
 - ▶ Can be combined with Desktop license for single user realtime

- ▶ Time limited project licenses to support small programs

New feature: SMP2 Support

Completed SMP2 compliance



New feature: EuroSim C++ API



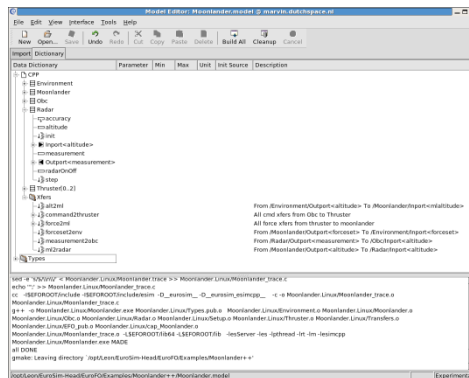
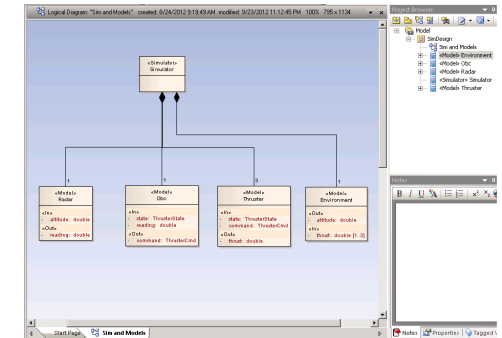
Brand new hard real-time Native C++ API

- ▶ Intuitive:

- ▶ Minimal learning curve

- ▶ Experience based:

- ▶ Following the proven dataflow approach



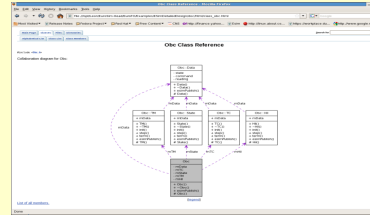
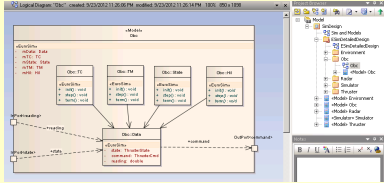
- ▶ Powerful:

- ▶ Includes all features typically needed in EGSE

- ▶ Modern OO tools:

- ▶ Supporting Eclipse and UML (EA)

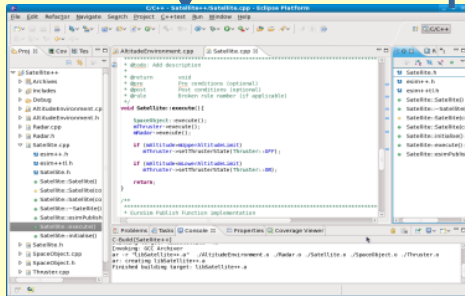
New Object Oriented Modeling



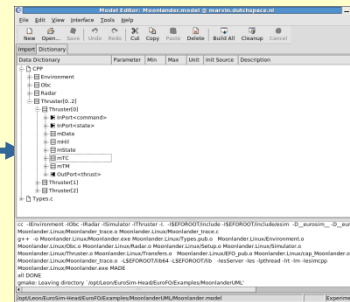
Design
Documentation

Enterprise Architect
*UML Transformation &
Source Generation*

Doxygen



lib



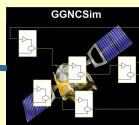
Simulator

External
Model
Code

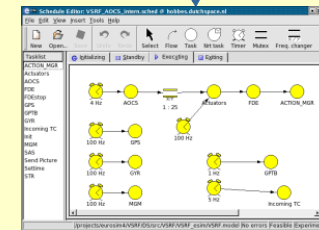
Eclipse (elaboration)

ModelEditor (Build)

api



lib



*RealTime
schedules*

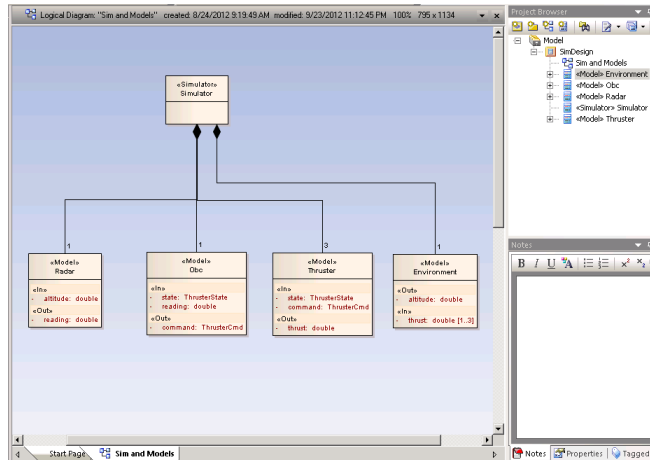
ScheduleEditor (timing)

New Addon: UML EA extension

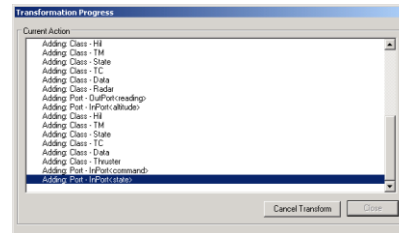
Jump start your real-time simulator development using the Enterprise Architect UML extension from Dutch Space

- 1) Define your simulator architecture
- 2) Transform to detailed design
- 3) Generate ready to build code
- 4) Elaborate with your algorithms

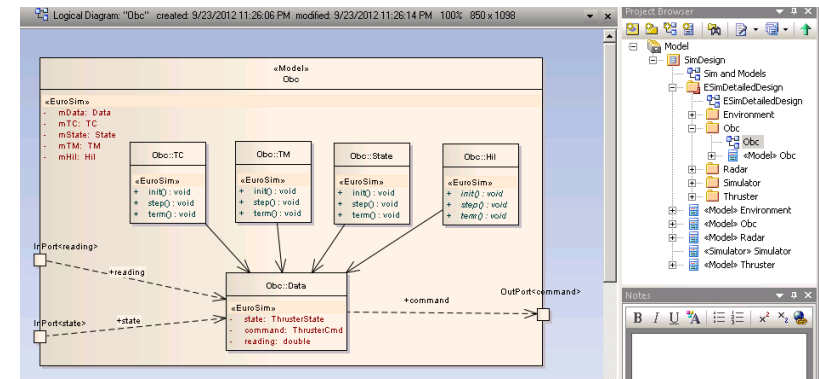
Model Transformation



1) Define the Simulator Architecture as composition of unit models

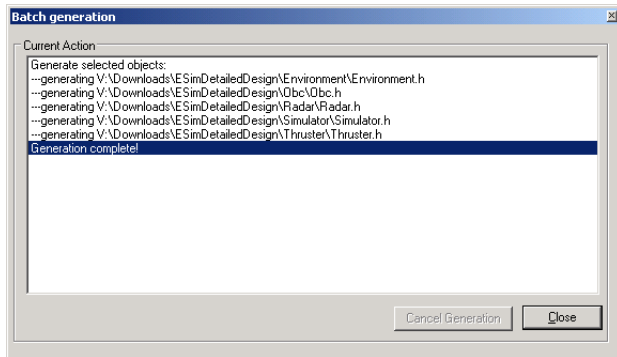


2) Transform to Unit Detailed Design using Dataflow Pattern

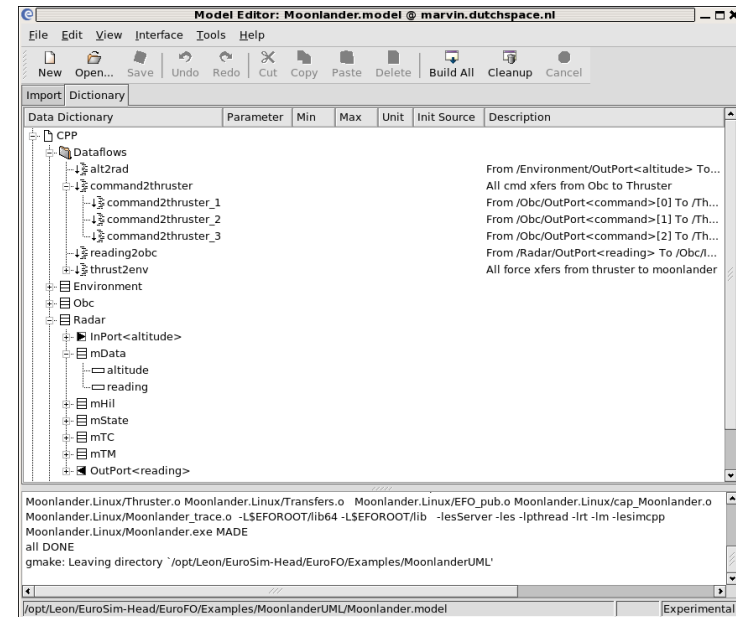


3) Refine each Unit Detailed Design

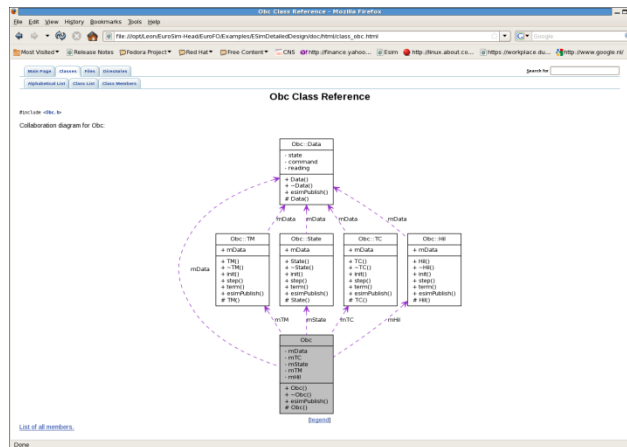
New Addons: UML EA extension



4) Generate ready to build and annotated Sources



5) Build Dictionary and Add Dataflows

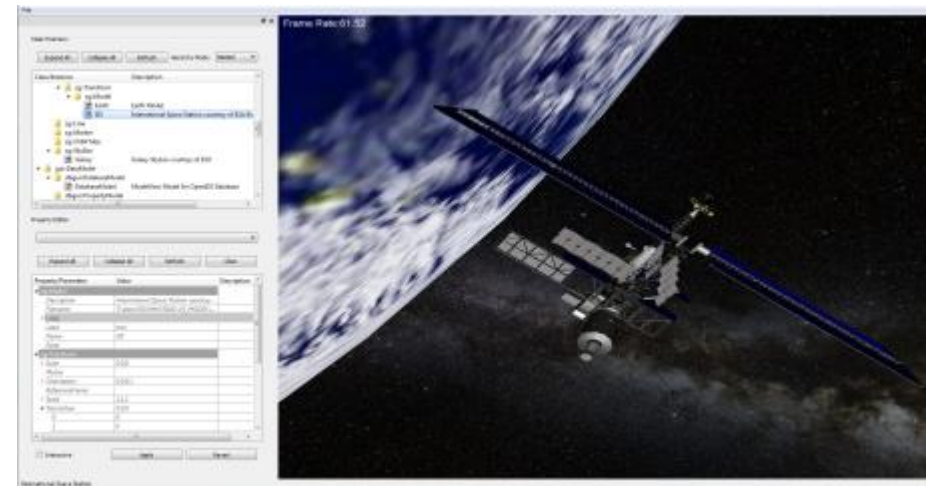


6) Retrieve your actual design with doxygen

New Addons: OpenIGS2

Powerful new visualization tool

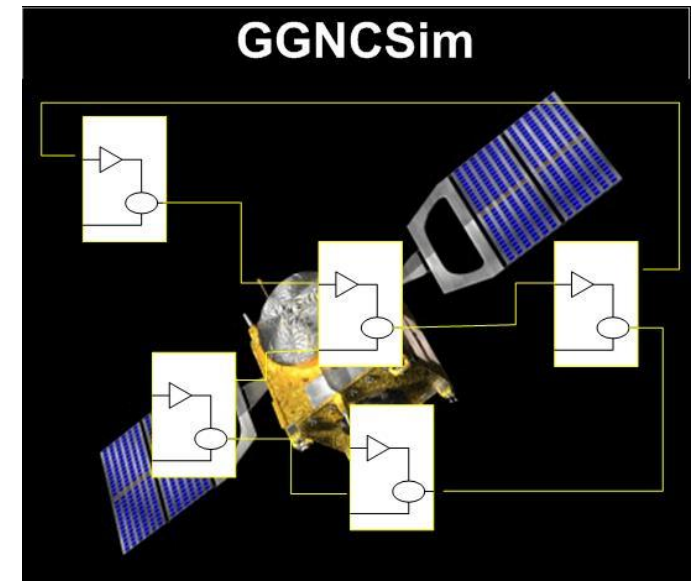
- ▶ Modular extendable solution
- ▶ Multiple simultaneous sources
- ▶ EuroSim connector built in
- ▶ Editors & templates provided
- ▶ Runs on Linux and Windows



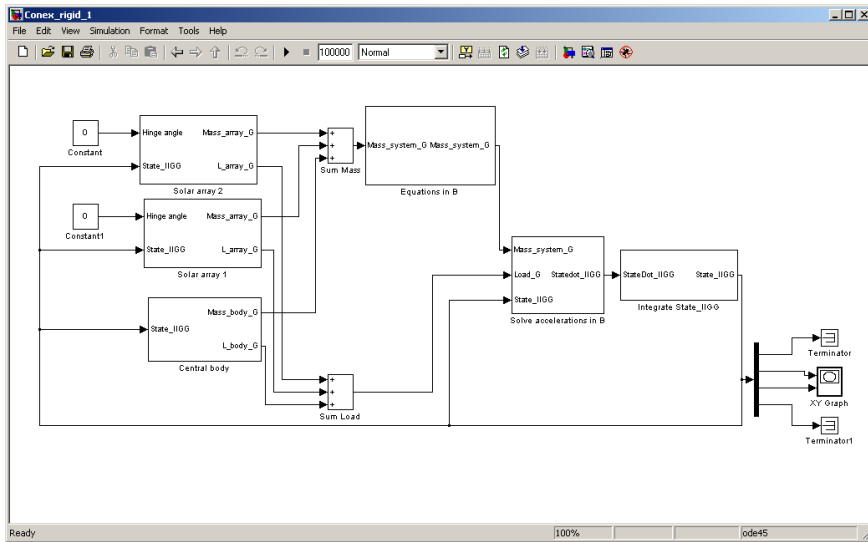
New Addons: GGNC Sim

A library of realtime models, directly usable from Matlab/Simulink and EuroSim for Guidance and Navigation Control

- 1) Use the same model in both tools,
- 2) Available on windows and Linux
- 3) Applied in major programs
- 4) Validated by NLR



Developing GGNC Simulations



1) Design in MatLab/Simulink

2) Use the same functions in EuroSim

Simulation Controller: DemoSat.model @ marvin.dutchspace.nl

Simtime	Watchclock	Type	Thresh	Message
0:00:00	7:6500	message-clock		state transition from stand-by to executing
28:15:00	35:8000	message-clock		state transition from executing to stand-by
28:15:00	36:8000	message-clock		state transition from stand-by to exiting
28:15:00	36:8500	message-clock		simulator ended at Thu May 26 14:15:08 2011
28:15:00	36:8500	message-clock		state transition from exiting to wind
		message		shutdown
		message		Simulator terminated

Not Connected marvin.dutchspace.nl Test Controller Non Realtime Not Running 28:15:00 36:5667 Experimental

New Addons: Embedder

Develop your application on a EuroSim Server,
Generate a deployable real-time application for a target

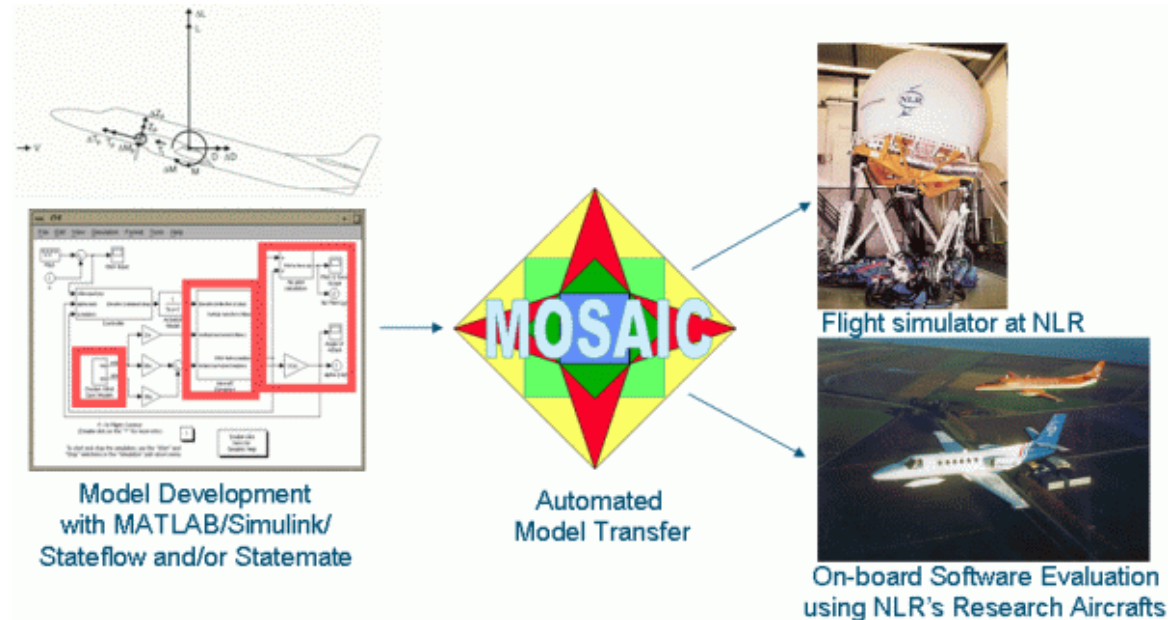
- 1) Generates library
- 2) Shared memory interface
- 3) Built on EuroSim scheduler
- 4) Integrity, Linux, Windows
- 5) Proven in Embedded Training



New Addons: MOSAIC

The well known tool MOSAIC from NLR, now version 9

- *Transforms from*
 - *Matlab/Simulink*
- *Transforms to*
 - *EuroSim native*
 - *EuroSim SMP2*



Improved Services: Training

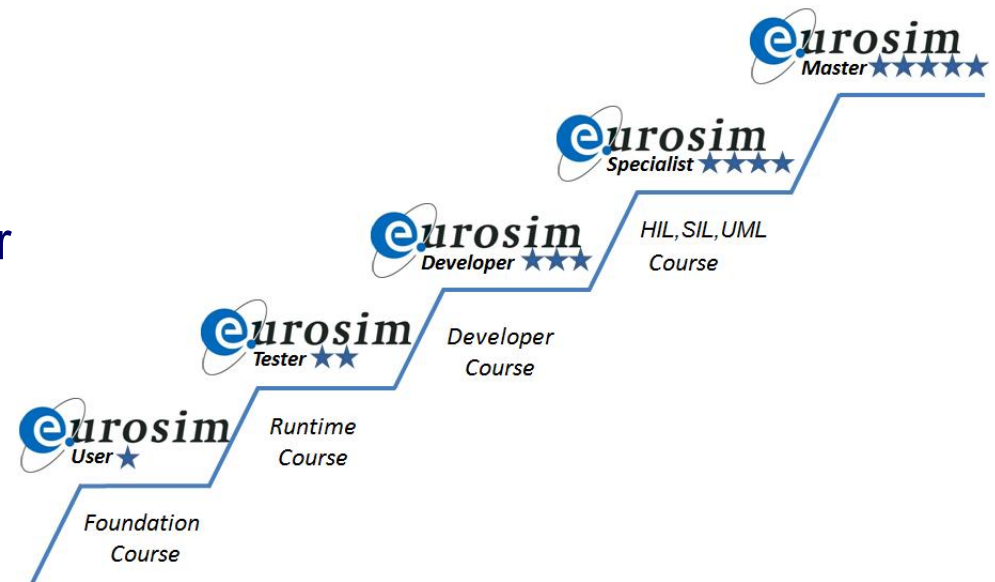
Updated and Expanded Training program

► *Base series*

- Foundation, Runtime, Developer updated with feedback and new features (C++, SMP2)

► *Specialist series*

- Added HIL and SIL integration courses
- Added UML extension course
- More courses coming



Improved Communication



Improved website layout with accurate information on products, services and support, and with new Forum enabled

Website :

- Improved layout, Expanded services and Up to date news

Forum:

- Notifications from helpdesk to users
- Community communication medium
- Dedicated channels for Addons

Secure Transfer Server

- Improved delivery and file exchange

